



LIETUVOS RESPUBLIKOS APLINKOS MINISTERIJA
THE MINISTRY OF ENVIRONMENT OF THE REPUBLIC OF LITHUANIA

A. Jakšto St 4, LT-01105 Vilnius, tel: (+370 5) 266 35 39, fax: (+370 5) 266 36 63, e-mail: info@am.lt http://www.am.lt

Ministry of Environment Protection and Regional Development 9 May 2018 No. (10-3)-D8 - 2515
Pieldu str. 25, Riga
LV-1494 Latvia
pasts@varam.gov.lv

NOTIFICATION REGARDING THE PROPOSED WIND FARM

According to Lithuanian legislation, directive 2011/92/EU (amended by 2014/52/EU) of the European Parliament and of the Council *On the Assessment of the effects of certain public and private projects on the environment* (hereinafter – EIA Directive), installations for the harnessing of wind power for energy production (wind farms) and UNECE Convention on Environmental Impact Assessment in a Transboundary Context (hereinafter – ESPOO Convention), is subject to the screening on the environmental impact assessment (hereinafter – screening on EIA).

The proposed economic activity is planned very close to the Latvian border, taking into account the requirements of the Article 7 of Directive 2011/92/EU and Article 3 of ESPOO Convention we would like to notify you about the initiation of the screening on environmental impact assessment (hereinafter – EIA) procedure for the proposed installations for the harnessing of wind power for energy production.

Screening on EIA procedure is being initiated by VVP Investment Ltd, the consultant of the developer Ekosistema Ltd prepares the EIA documentation (screening for EIA).

VVP Investment plans the construction and operation of 9 wind power plants, projected capacity of each of which is up to 5 MW, rotor diameter: up to 158 m, height of structures: up to 220 m. Water, land, soil and / or biodiversity resources will not be used in the location after construction of up to 9 wind power plants. It is planned to use one of the alternative power sources: wind power. The beginning of preparatory and construction works of the wind power plants is not clear yet; it could be in 2020-2021. Construction would be performed in one stage then.

Location of proposed economic activity – Telšiai County, Mažeikiai District Municipality, Židikai Ward, Juodeikėliai and Griežė Villages. The shortest distance from the planned wind power plants to the national border with the Republic of Latvia is 1.4 km.

The national screening for EIA procedure is performed in one stage. The screening on EIA document is prepared and presented to the entities of environmental impact assessment (the executive body of the municipality in the territory whereof the proposed economic activity is to be carried out, the institutions authorised by the Minister of Health, the institutions authorised by the Minister of the Interior responsible for fire and civil protection, the institutions authorised by the Minister of Culture responsible for the protection of cultural properties) and public for a review and consultation. Screening for environmental impact assessment shall have the objective of determining whether a specific proposed economic activity is subject to environmental impact assessment. The competent authority shall, upon examining the screening information, proposals

of entities of environmental impact assessment and the public concerned, adopt a screening conclusion on whether an environment impact assessment is obligatory.

Please advise us about your willingness to participate in the EIA procedure **by 4 of June 2018**. In case of positive answer please provide comments on the screening for EIA document (the document in Lithuanian language is available on website http://gamta.lt/files/PAV_atranka_VVP_skelbimui.pdf; the summary of which (including information about possible transboundary impacts) is in English, attached to this letter) by the same date. Please address your response to this notification and comments to Mr. Vitalijus Auglys point of contact regarding Notification in accordance with Article 3 of the Convention on Environmental Impact Assessment in a Transboundary Context. The contact information is provided below:

Mr. Vitalijus Auglys
Director of Pollution Prevention Department
Ministry of Environment of the Republic of Lithuania
Telephone (+370 5) 2663651
E-mail: vitalijus.auglys@am.lt

Yours sincerely

Dalius Krinickas
Vice Minister



B. Vilimaite Silobritiene (+370 5) 2 663654 e-mail: beata.silobritiene@am.lt

**SUMMARY OF INFORMATION FOR SELECTION PERTAINING TO
ENVIRONMENTAL IMPACT ASSESSMENT OF PLANNED ECONOMIC
ACTIVITIES (CONSTRUCTION AND OPERATION OF 9 WIND POWER PLANTS)
IN MAŽEIKIAI DISTRICT MUNICIPALITY, ŽIDIKAI WARD, JUODEIKĖLIAI AND
GRIEŽĖ VILLAGES**

Organizer of planned economic activities:

UAB (Private Limited Liability Company) "VVP Investment", Šaulių Str. 19, LT-92137 Klaipėda, mobile tel.: (8 659) 98265, e-mail: info@vvpinvestment.lt.

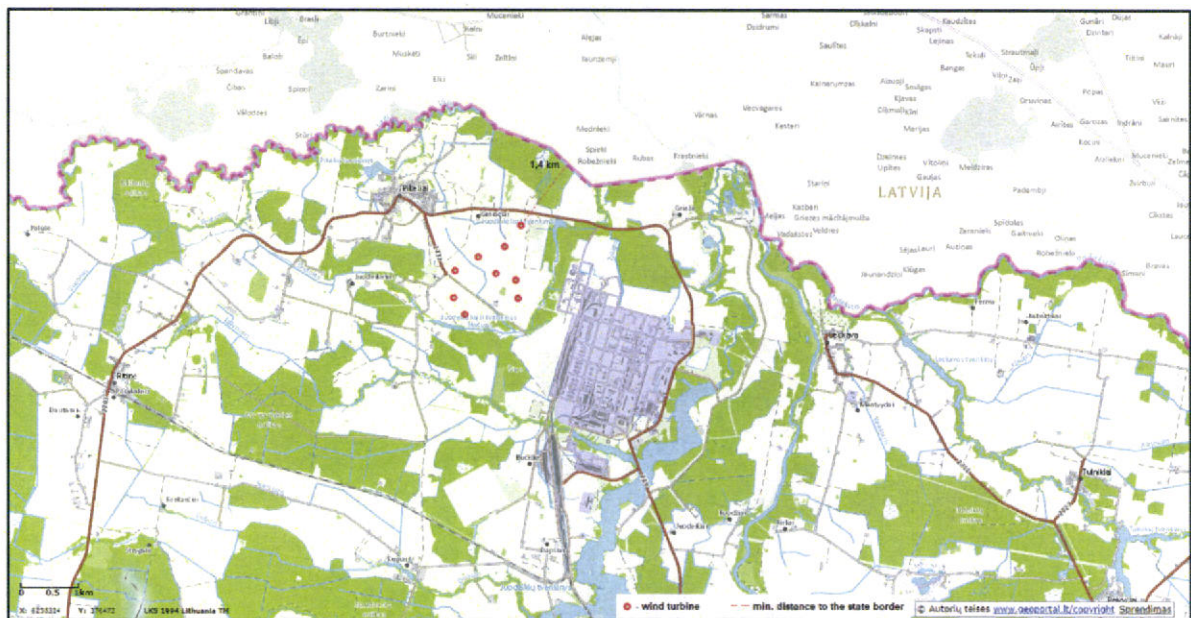
Planned economic activities:

Construction and operation of 9 wind power plants planned capacity of each of which is up to 5 MW, rotor diameter: up to 158 m, height of structures: up to 220 m. Water, land, soil and / or biodiversity resources will not be used in the location after construction of up to 9 wind power plants. It is planned to use one of the alternative power sources: wind power. The beginning of preparatory and construction works of the wind power plants is not clear yet; it could be in 2020-2021. Construction would be performed in one stage then.

Location of planned economic activities:

Telšiai County, Mažeikiai District Municipality, Židikai Ward, Juodeikėliai and Griežė Villages, cadaster Nos. of the land plots: 6134/0008:52, 6134/0008:246, 6134/0008:156, 6134/0008:301, 6134/0008:347, 6134/0008:76, 6134/0008:234, 6134/0007:52 and 6134/0007:30. Coordinates of layout of the planned wind power plants: 6254299.00 384813.00; 6254044.04 384393.77; 6253991.85 385119.10; 6254482.00 385282.00; 6254864.29 385577.52; 6253862.68 385486.25; 6253543.47 385516.64; 6253244.46 384574.54; 6253552.00 384372.00. Pursuant to the General Plan of Mažeikiai District Territory approved by the Decision No. T-95 of Mažeikiai District Municipality Board of 27/03/2009, the territory in which construction and operation of the wind power plants is planned is intended for infrastructure and wind power in the General Plan of Mažeikiai District.

The shortest distance from the planned wind power plants to the national border with the Republic of Latvia is 1.4 km (see picture 1).



Picture 1. Layout scheme of the wind power plants

Environmental impact:

The procedures of environmental and social health impact were performed as follows: the decision regarding extension of validity of the conclusion of the selection of environmental impact assessment of planned economic construction of a wind farm in Mažeikiai District expired on 10/02/2018; the procedures of social health impact regarding the aforementioned wind farm were performed as well as a sanitary protection zone was formed and legalized in 2015 (the area of the zone varies 255÷430 m from the towers of the wind power plants. It is anticipated to use the existing infrastructure while planning construction and operation, e.g. local roads (access roads) which will be strengthened and / or renovated as needed. Generated electricity will be connected from the wind power plant to the connection spot specified in the conditions of the power network operator using 110 kV power cables.

In order to avoid exceeding noise levels of the wind power plants in the nearest residential environment, the distance corresponding to at least 45 dBA sound level will be maintained from the wind power plants to the territories of the nearest residential homesteads; the sanitary protection zone was formed taking this into account. The results of the spread of shadow movement also showed that shadow movement of the planned wind power plants will not reach the nearest residential environment or the national border with the Republic of Latvia. The planned economic activities will not have any adverse effect on the air or climate. Wind power can fully replace organic fuel used to generate electricity. A lot of pollutants are emitted to ambient air when incinerating organic fuel; they cause the greenhouse effect, induce global climate warming, formation of smog and acid rains which destroy the vegetation and oxidize the soil. Therefore, use of wind power is a very important factor for solving environmental protection issues. The effect on the landscape cannot be measured or calculated quantitatively; therefore, impact reduction measures are limited and, aiming to reduce the impact on the landscape, it is recommended to design the structures of the wind power plants by imitating the forms found in nature and to paint them in bright colours. Special composition of the paint will allow avoiding shiny structures and formation of reflections.

Should a body in charge decide that it is expedient to conduct monitoring in this location and that the location of the activities meets the criteria applicable to conduction of monitoring, the organizer of planned economic activities UAB "VVP Investment" will perform monitoring of birds and bats in line with standardized methodologies. It is predicted that no significant impact on the environment will be caused during the planned economic activities and construction works of the wind power plants will not be performed during the spring migration of birds, i.e. in March-May, and such works will be performed within as short period of time as possible in order to reduce disturbance of local brooding birds. The most optimum time for the construction works of the wind power plants is August-February.

The wind power plant(s) will not pose any danger to the environment even in an extreme situation if it (they) fall of (break). Mechanical deformations of the towers of the wind plants, their collapse or fall off of the blades would cause negative consequences and be dangerous at the towers themselves because heavy structures cannot be tossed by wind. Thus the cone of potential impact is determined by the height of the structures only which is 220 meters in this case, whereas the residential territory which is the closest to the planned wind power plants is 0.6÷1.1 km away and the national border with the Republic of Latvia is 1.4 km away. The planned economic activities will not have significant cross-border impact on the environment.